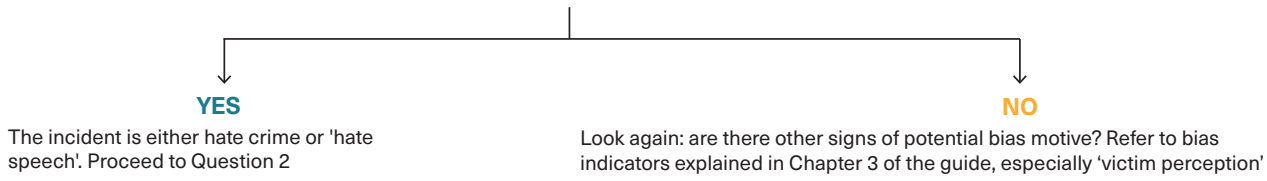
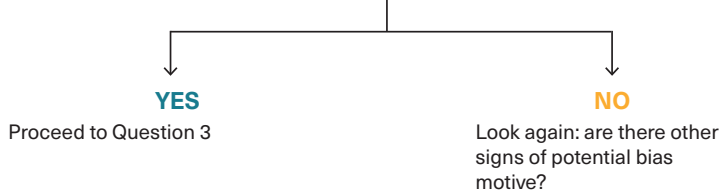


HATE CRIME/CRIMINALIZED HATE SPEECH PROSECUTOR DECISION TREE*

1: DOES THE INCIDENT INVOLVE HATE, BIAS OR PREJUDICE?



2: DOES THE INCIDENT INCLUDE BIASED SPEECH OR EXPRESSION?



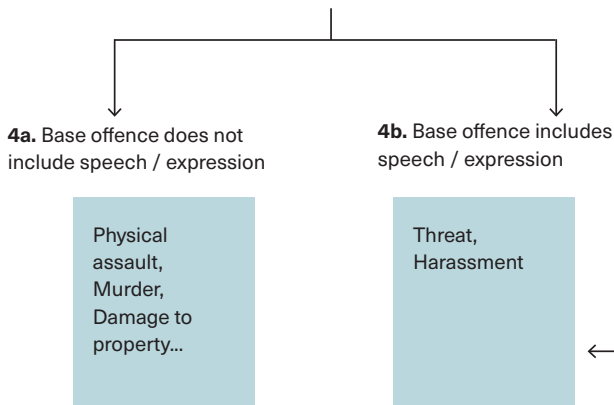
3: IS THE INCIDENT A CRIME IF THE BIASED EXPRESSION IS REMOVED?

YES = HATE CRIME
Criminal offence + bias motive

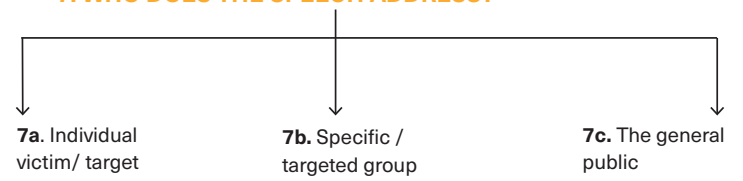
NO = CRIMINALIZED HATE SPEECH
The content of the expression comprises the crime

Coordinate with partners including victim's lawyer on seeking appropriate civil or administrative remedies.

4: WHAT CRIME IS INVOLVED: WHAT IS THE BASE OFFENCE?

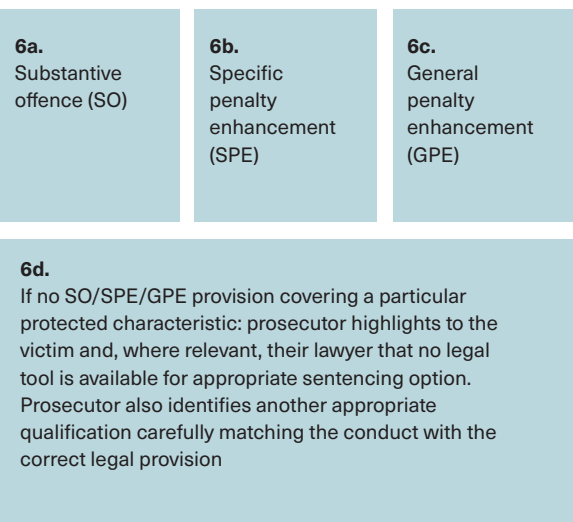


7: WHO DOES THE SPEECH ADDRESS?

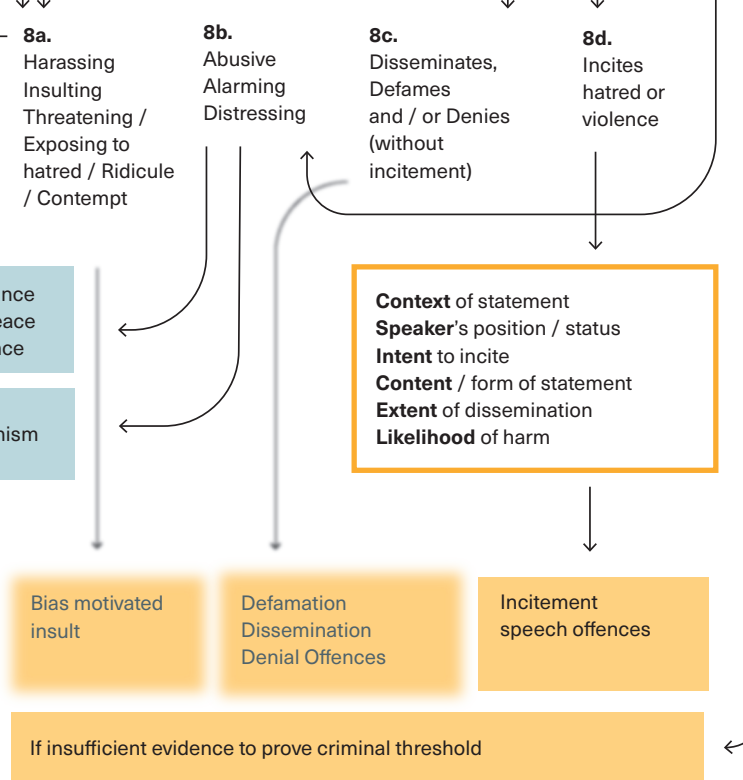


5: IDENTIFY, COLLECT AND CAPTURE EVIDENCE OF BIAS MOTIVATION

6: SELECT BIAS MOTIVATION PROVISION



8: WHAT DOES THE 'HATE SPEECH' DO?



* Use Prosecutor Decision Tree in conjunction with Chapter 3 of the guide, which provides guidance on using this tool