

 **United States Chamber of Commerce**   
**Eurasia Business Platform Initiative**

**World Custom Organization's  
SAFE Framework of Standards:  
*the Multilateral Approach***

*Eric Stewart*  
*US Chamber of Commerce*

*February 2, 2010*  
*18<sup>th</sup> OSCE Economic & Environmental Forum*  
*Vienna, Austria*

 **United States Chamber of Commerce**   
**Eurasia Business Platform Initiative**

**THE CAUCASUS AND CENTRAL ASIA**



Scale 1:119,000,000  
Lambert Conformal Conic Projection,  
standard parallels 47° N and 62° N  
9th Edition  
Boundary representation is not necessarily authoritative  
902999A1 (000) FEB 7-00

## **Eurasia Business Platform**

- ❖ Eurasia Business Platform was launched by the U.S. Chamber of Commerce in 2006.
- ❖ The U.S. Chambers partners with its affiliated American Chambers of Commerce throughout the region on this effort.
- ❖ Eurasia Business Platform's goal is to foster regional economic cooperation and secure trade facilitation across Eurasia.
- ❖ Eurasia Business Platform is a mechanism for the business community to have input with policy makers in Washington, DC, Eurasian governments, and within regional framework institutions like the SCO, GUAM and EurAsEC.

## **Key Eurasia Business Platform Projects**

- ❖ **Land Transport Options Study**
- ❖ **AmCham Investment and Trade Facilitation Survey**
- ❖ **Security and Trade Facilitation Study**



THE CHAMBER OF COMMERCE OF THE  
UNITED STATES



LAND TRANSPORT OPTIONS BETWEEN  
EUROPE AND ASIA:  
Commercial Feasibility Study

July 2006

## Beijing to Brussels

- ❖ Maritime accounts for 85%
- ❖ Rail accounts for 3-4%
- ❖ Trucking accounts for <1%

## AmCham Survey 2008

### ❖ 2008 AmCham Survey on Investment Climate, Transport, and Trade Facilitation

❖ Survey sent to almost 1000 businesses across Eurasia.

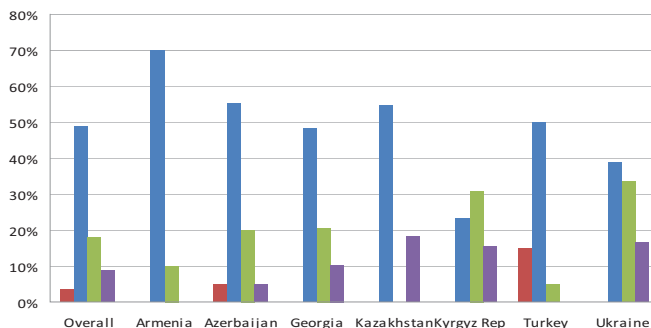
#### Key Results:

- ❖ 57% report current business climate as “good”
- ❖ 60% say the situation will continue to improve
- ❖ 75% report they must add additional human resources to deal with customs regulations.
- ❖ 61% report travel/transit times are slow due to poor road and rail conditions.
- ❖ Greater than half of all respondents say that with overall improvements in the business and investment climate, their business would improve by over 50%

## Transport Security Assessment

Figure 16: Transport Security Assessment

■ Very good: borders and customs checkpoints are sophisticated and reliable  
■ Fair: could use improvement  
■ Poor: border facilities are not adequate  
■ Terrible: borders are porous; illegal, dangerous and/or contraband material travels easily through borders





**Balancing Security and Trade Facilitation in the  
21st Century Global Supply Chain:**



*A Study Evaluating International Agreements  
to Implement  
The SAFE Framework of Standards*

April 2, 2008

## Key Findings

- Current approach to implementation is **bilateral only**
- A combined multilateral/bilateral will ensure greater efficiency and uniformity
- And will ensure we avoid.....



## More than 24,000 Agreements “Spaghetti Bowl”



## Request

- Respectfully request the UNECE to work with the WCO to review our findings and utilize the multilateral approach to *unravel the spaghetti*.
- Thank you!

